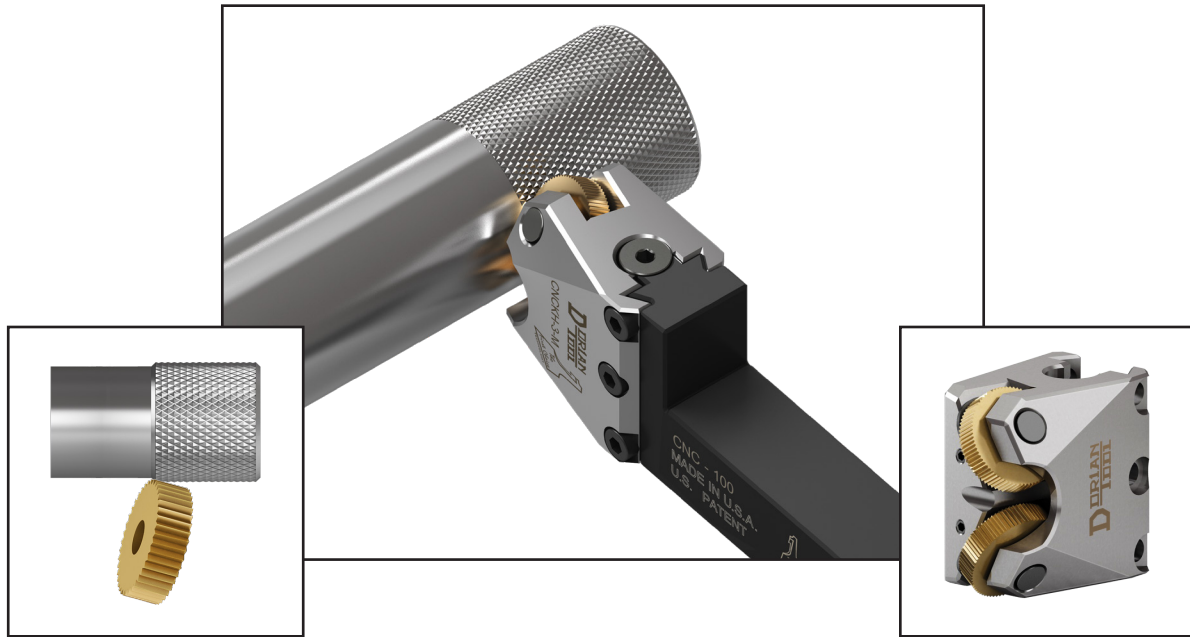


Did You Know?



Knurl Cutting

Cutting Type Knurling tools create a knurling pattern by material removal. The Cutting Knurling Process is performed when the knurling tool holds the knurling wheel with a lead angle that creates a sharp cutting edge.

The Knurl Cutting Tool is engineered to reduce the pressure exerted onto the work piece and minimize stress to the spindle of the lathe during the operation. The Cutting Style Tool is the best for knurling any material, including hard and large size work pieces as well as, for thin wall tubing. The performance of the Knurl Cutting Tool is up to 20 times faster than a conventional Knurl Forming Tool.

Interesting Fact:

Dorian Tool's Knurl Cutting Tools engineered for CNC Turning Centers, are easy to set up and simple to use, for high performance and productivity.